



Helping your laboratory
Discover more – Deliver more
from every sample



Delivering technical innovations that enhance every aspect of GC-MS workflow...

The specialist analytical instrument manufacturers in Schauenburg Analytics Group harness applications and engineering expertise to improve all aspects of the gas chromatography workflow and deliver better business and scientific outcomes for both research and routine laboratories.

Our mission is to develop technologies that allow scientists around the world to improve throughput and maximise the quality and quantity of information extracted from every sample. With expertise in every area from sample preparation to the processing and interpretation of complex data sets we also provide the ongoing support and partnership your laboratory can rely on.

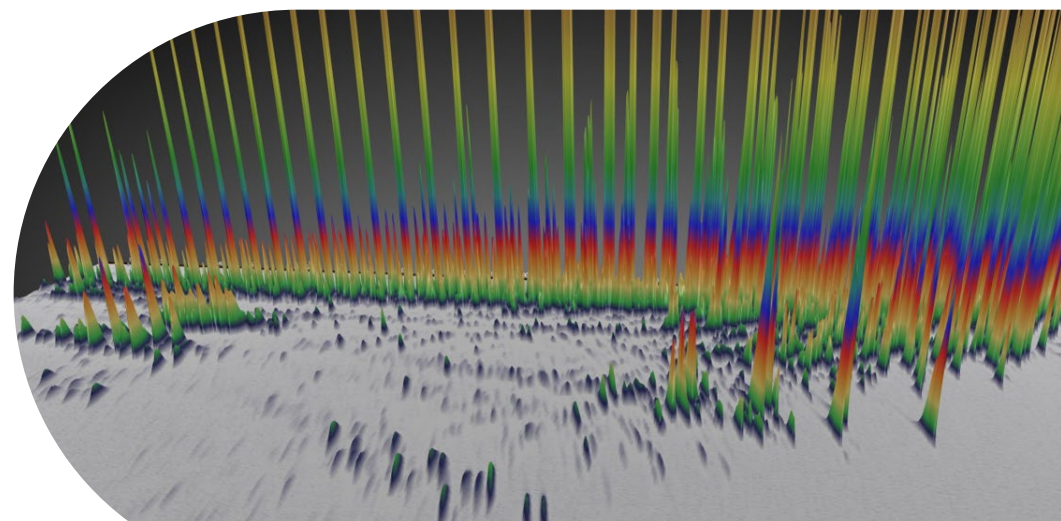
Reveal more components



Innovative automation for extraction and enrichment of trace organics in solid, liquid and gas-phase samples reveals previously undetected trace compounds. Multiple sampling approaches can also be applied to every sample, generating complementary information.



Resolve more components

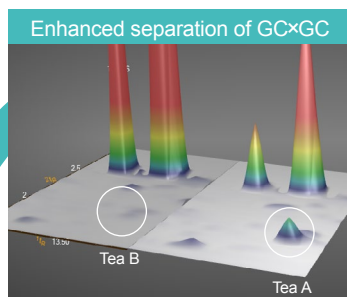


Intuitive implementation and reporting of GCxGC data delivers comprehensive sample details in complex mixtures. A simplified user interface builds user confidence.

Delivering technical innovations that enhance every aspect of GC-MS workflow...

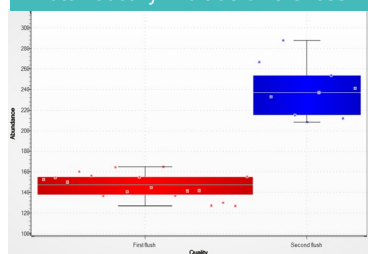
The technologies produced by our Group companies such as Markes International and SepSolve Analytical range from world-leading thermal desorption, extraction and enrichment platforms to enhanced separation, detection and data-processing tools.

Unparalleled
analytical
resolution

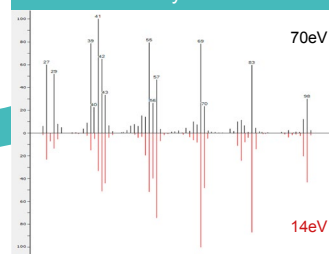


Comprehensive analytical resolution

Automatically find true differences



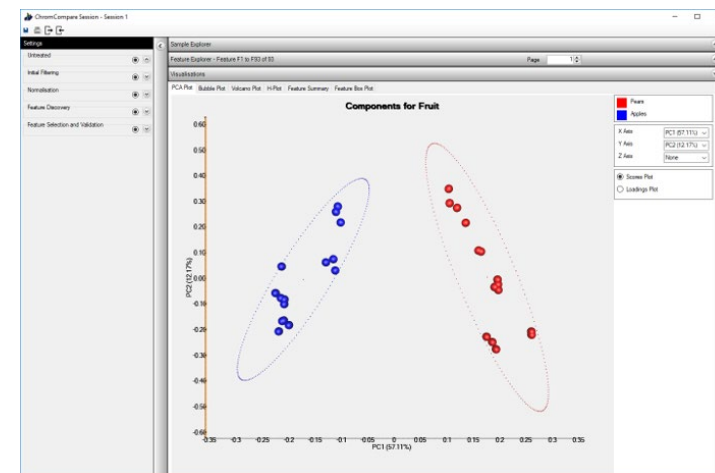
Confirmatory tandem data



Novel detection and data processing technologies combine to provide exceptional spectral fidelity, enhanced mass resolution and augmented spectral confirmation of compound identity. Together they deliver an unparalleled level of overall analytical resolution.



Powerful yet simple reporting and classification

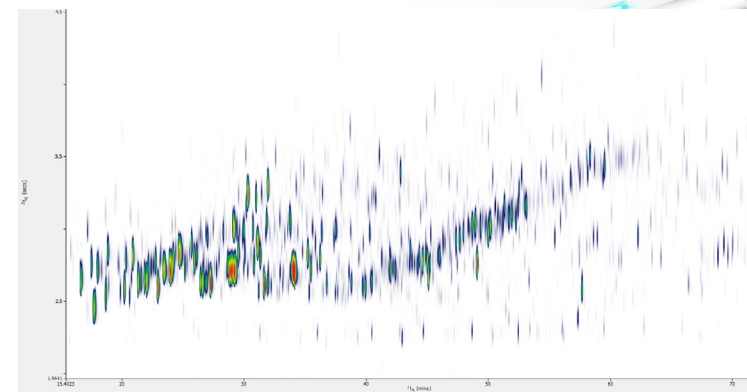
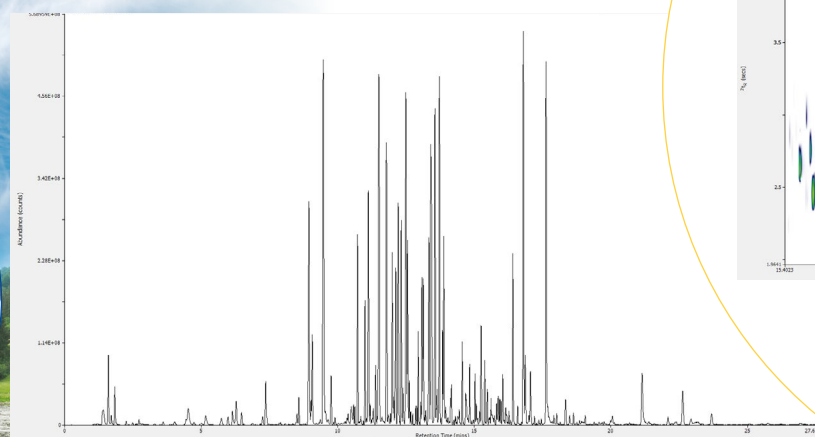
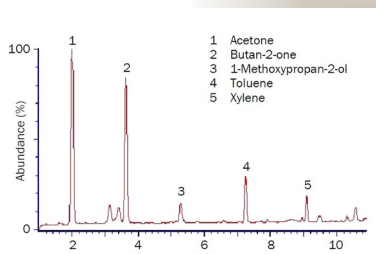


An easy-to-use chemometrics platform to transform complex data into meaningful conclusions to characterize and classify your samples.

Delivering better insights and business outcomes across research and routine applications

Products from Schauenburg Analytics' Group companies can be purchased individually to enhance the performance of existing laboratory systems regardless of the application.

Alternatively, our products can be configured into complete turnkey systems – optimising the workflow from end-to-end and combining unparalleled analytical resolution with intelligent automated data processing. This allows the extraction of useful sample information to be maximised without users being overwhelmed by data.



Markes' world-leading series of thermal desorbers for air and gas-phase applications (sorbent tubes and canisters) allow analysis of ultra-trace level toxic or odorous compounds undetected on other systems.

Markes' Centri® platform automates multiple extraction modes (headspace, TD, SPME & sorptive) and combines them all with advanced enrichment to reveal many more trace-level compounds. Ideal for foods, natural products and environmental samples.

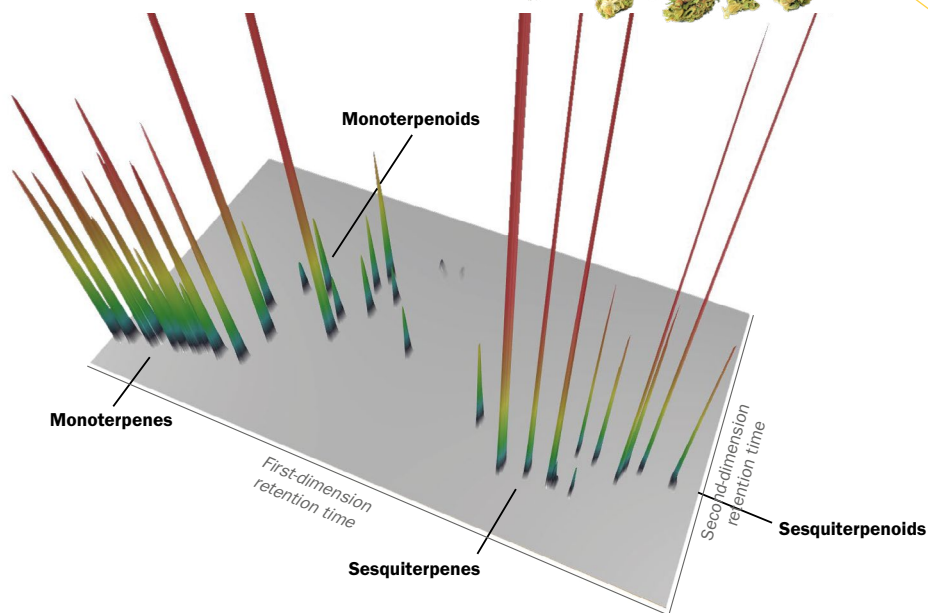
SepSolve's robust INSIGHT® hardware and intuitive ChromSpace® GC×GC software deliver comprehensive sample information in a convenient way. Ideal for fragrance and aroma profiles, fingerprinting complex petrochemicals and identifying novel contaminants.

Discover more – Deliver more

Delivering better insights and business outcomes across research and routine applications

We also specialise in helping labs transition from discovery approaches to fast targeted methods, for improved productivity and higher return on investment.

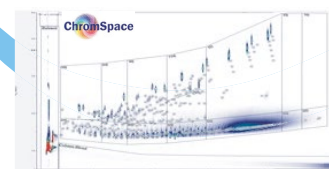
Gain greater insight into the aroma-active components present in complex samples, such as cannabis, for improved flavour interpretation and innovative product labelling strategies.



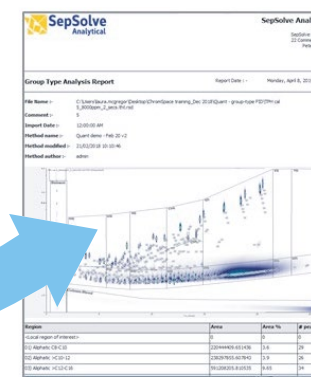
Soil or sediment sample



Single solvent extract



Single analysis AND
automated real-time data processing

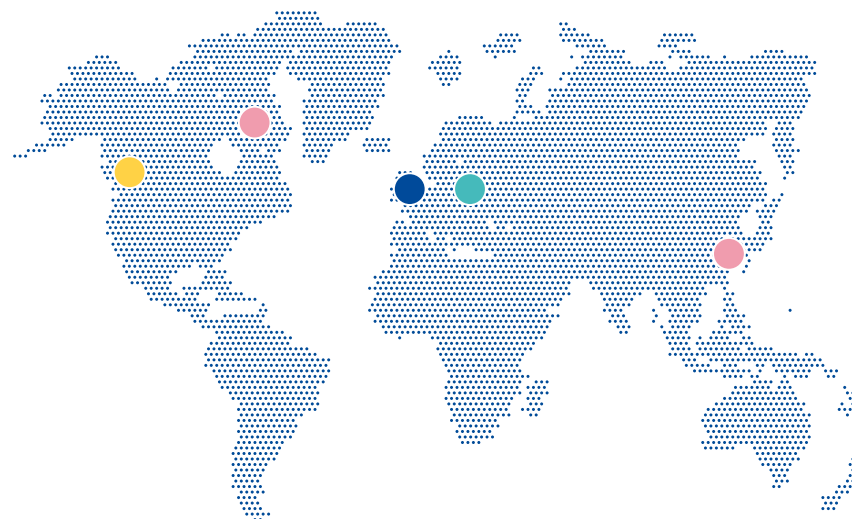


Reporting

Stable analytical methods, enhanced automation and high-speed processing enable complex analyses to be performed in high-throughput routine laboratories, such as for environmental monitoring of total petroleum hydrocarbons (TPH) in soil.

Providing readily-accessed expertise your laboratory can rely on

The technical teams at Group companies such as Markes International and SepSolve Analytical have many hundreds of years of combined experience at the forefront of GC applications and system engineering. We are constantly monitoring market and regulatory developments and pioneering relevant technical advances in order to better support evolving customer needs.



Research and development is the foundation of our business model. Schauenburg Analytics Group products are designed and manufactured inhouse by our experienced engineering teams and benefit from joint research projects with leading institutes.

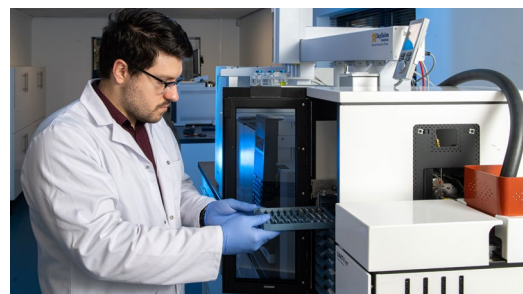
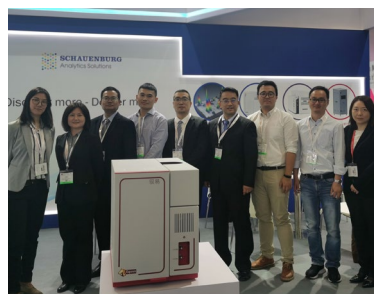
Our in-house experts work closely with international standards agencies while trained specialists in our bases around the world support our partners and customers. We offer both expert technical knowledge and a detailed understanding of the scientific, regulatory-compliance and business outcomes required.

Discover more – Deliver more



Providing readily-accessed expertise your laboratory can rely on

Investing in us is just the start of an ongoing business relationship that includes access to our exceptional expert resource. With multiple operational centres around the world, our specialists and network of global sales and service partners will advise and work with you throughout the life of your system.



Our technical support is available in many languages and time zones via email, phone and online. Whether you want advice on sampler selection...

... or the at-site assistance of applications specialists to configure new and advanced workflow solutions, Schauburg Analytics Group companies provide unparalleled access to the expert support you need.

Discover more – Deliver more



hello@schauenburganalytics.com
www.schauenburganalytics.com

Schauenburg Analytics Ltd

1000B Central Park,
Western Avenue,
Bridgend,
CF31 3RT
UK

T: +44 (0)1443 233920



enquiries@markes.com | www.markes.com

Markes International Ltd The world's leading supplier of extraction, enrichment and thermal desorption technology

Markes International Ltd

1000B Central Park,
Western Avenue,
Bridgend,
CF31 3RT
UK

T: +44 (0)1443 230935

Markes International Inc.

2355 Gold Meadow Way
Gold River
Sacramento
California 95670
USA

T: +1 866-483-5684 (toll-free)

Markes International GmbH

Bieberer Straße 1–7
63065 Offenbach am Main
Germany

T: +49 (0)69 6681089-10

Markes Instruments (Shanghai) Co., Ltd

Unit 1002, Building 1
No.418, Guilin Road
Shanghai 200233
P.R. China

T: +86 21 5465 1216
www.markes.com.cn



hello@sepsolve.com | www.sepsolve.com

Innovative technologies and systems for enhanced GC–MS analysis

SepSolve Analytical Ltd

4 Swan Court
Cygnet Park
Peterborough
PE7 8GX
UK

T: 44 (0)1733 669222

SepSolve Analytical Ltd

Bieberer Straße 1–7
63065 Offenbach am Main
Germany

T: +49 (0)69 668 108 920

SepSolve Analytical Ltd

826 King Street North,
Waterloo, Ontario,
N2J 4G8
Canada

T: +1 519 206 0055



helpdesk@schauenburganalytics.com
www.schauenburganalytics.com.cn

Schauenburg Analytics Solutions (Shanghai) Co., Ltd

Room 1001, 1003, 1004, 1006, Building 1,
No. 418, Guilin Road,
Shanghai 200233,
P.R. China

T: +8621-54260106

Discover more – Deliver more



A company of the **SCHAUBURG** International Group